



## ***Periodic solutions for a model of cell population subjected to general periodic radiation***

HOMERO G. DÍAZ-MARÍN <sup>a</sup>, OSVALDO OSUNA <sup>b</sup> ✉

<sup>a</sup> Universidad Michoacana, Facultad de Ciencias Físico-Matemáticas, Michoacán, México. E-mail: [hdiaz@umich.mx](mailto:hdiaz@umich.mx).

<sup>b</sup> Universidad Michoacana, Instituto de Física y Matemáticas, Michoacán, México. E-mail: [osvaldo.osuna@umich.mx](mailto:osvaldo.osuna@umich.mx).

**Abstract.** In this work, we considered models with periodic radiation cancer treatment which describe the dynamics of cell populations in a tumor. This may also be used to consider dynamics of healthy tissue under periodic radiation exposure. We establish the existence of periodic orbits, by using theory of cooperative systems. We give sufficient conditions for the uniqueness of the periodic solution which then becomes a global attractor. Numerical simulations are performed using specific radiation functions to illustrate our analytical findings.

**Keywords:** Cancer treatment modelling, cooperative systems, periodic orbits, radiation.

**MSC2010:** 92C50, 34C25, 34C12.

## ***Soluciones periódicas para un modelo de población celular sujeto a una radiación periódica general***

**Resumen.** En este trabajo consideramos modelos con tratamiento de radiación periódica contra el cáncer que describen la dinámica de las poblaciones celulares en un tumor. Establecemos la existencia de órbitas periódicas, utilizando la teoría de los sistemas cooperativos. Damos condiciones suficientes para la unicidad de la solución periódica, también para que esta sea un atractor global. Realizamos simulaciones numéricas utilizando funciones de radiación específicas para ilustrar nuestros resultados analíticos.

**Palabras clave:** Modelos de tratamiento contra el cáncer, sistemas cooperativos, órbitas periódicas, radiación.

---

Corresponding author. ✉

Received: 30 August 2019, Accepted: 10 March 2020.

To cite this article: O. Osuna and H. G. Díaz-Marín, Periodic solutions for a model of cell population subjected to general periodic radiation, *Rev. Integr. temas mat.* 38 (2020), No. 2, 81-91. doi: 10.18273/revint.v38n2-2020001

## 1. Introduction

Successful mathematical models for tumor growth consider two main stages of development, the stage of free development as an isolated mass of cells, and the vascularized stage, where cells interact with blood and immune cells giving rise to the metastasis process. In the first stage (see for instance [9]) a heterogeneous population of cells is also required for properly model the tumor development. The simplest models consider two kinds of cells within the tumor: on one hand there are *quiescent cells* that have almost lost their capacity to reproduce and can produce necrosis depending on nutrients, oxygen availability and necrosis substances; on the other hand we consider *proliferative cells*, which evolve in time increasing their number. The interchange between these two subpopulations can occur by two processes: the *recruitment* of quiescent tumor cells into proliferative (see [5]) which is supposed to occur at a constant rate; and the inverse process, i.e. the cessation of reproduction for a proliferative cells that changes into quiescent cells at a constant rate.

We consider models for radiation treatment where these tumor cell subpopulations are affected in different ways. Thus proliferative cells may be considered as *healthy* and quiescent as *radiated* that is as a sub-product of radiation, as in the terminology of [3], [4]. The passage from healthy into radiated cells occurs at a rate that may be regulated by the radiation treatment. The importance of understanding this models for radiation dosis that evolve in time motivates our work, which may be considered as an extension of the results of [3]. We consider a time,  $t > 0$ , dependent  $T$ -periodic radiation dosis,  $D(t) \geq 0$ ; nevertheless, we consider *any* continuous function rather than just few representative examples of periodic functions. We conclude the existence of a  $T$ -periodic evolution of subpopulations for radiation treatments in Theorem 2.2; we also give sufficient conditions for uniqueness of a stable attracting  $T$ -periodic solution in Theorem 2.3.

The tools we use to prove our result arise directly from the Theory of Cooperative systems (see [6, 8]).

The model consists of the following system of differential equations:

$$\dot{u} = ru(1 - u/K) - D(t)u + pv, \quad (1a)$$

$$\dot{v} = D(t)u - pv - \delta v, \quad (1b)$$

where  $(u, v)$  consists of the pair of healthy (proliferating) and radiated (quiescent) cell subpopulations of the tumor,  $\delta > 0$  stands for the constant death rate of radiated cells,  $0 < p < 1$  stands for the rate of radiated cells that become healthy spontaneously by the process called recruitment of quiescent cells. We consider the logistic growth law for the healthy cells  $ru(1 - u/K)$  with  $r > 0$  as the initial grow rate, and  $K > 0$  as the cell capacity (maximal healthy population) which under the supposition of no vascularization remains constant.

## 2. Results

For the readers convenience we first recall some basic facts about cooperative systems that will be used for proving our results.

For two points  $\xi, \eta \in \mathbb{R}^n$  denote the partial order  $\xi \leq \eta$  if  $\xi_i \leq \eta_i$  for each  $i$ , also denote  $\xi < \eta$  if  $\xi \leq \eta$  and  $\xi \neq \eta$ . Consider a system

$$\begin{aligned} \dot{x} &= f(t, x(t), y(t)), \\ \dot{y} &= g(t, x(t), y(t)), \end{aligned} \tag{2}$$

where  $f, g$  are  $C^1$  in an open  $D \subset \mathbb{R}^2$  and continuous  $T$ -periodic functions on  $t$ . System (2) is said a *cooperative system* in  $\mathbb{R} \times D$  if

$$f_y(t, x, y) \geq 0, \text{ and } g_x(t, x, y) \geq 0, \forall t \in \mathbb{R}, (x, y) \in D. \tag{3}$$

Cooperative systems have very important properties; for a brief introduction to the subject see [8].

We say that a pair of  $T$ -periodic differentiable functions  $(a(t), b(t))$  is a *sub-solution pair* of (2) if

$$\begin{aligned} \dot{a} &\leq f(t, a(t), b(t)), \\ \dot{b} &\leq g(t, a(t), b(t)), \text{ for all } t; \end{aligned} \tag{4}$$

analogously, a pair of  $T$ -periodic differentiable functions  $(A(t), B(t))$  is a *super-solution pair* if

$$\begin{aligned} \dot{A} &\geq f(t, A(t), B(t)), \\ \dot{B} &\geq g(t, A(t), B(t)), \text{ for all } t. \end{aligned} \tag{5}$$

We say that sub- and super-solution pairs are ordered if for all  $t$  we have  $a(t) < A(t)$  and  $b(t) < B(t)$ .

An important feature for cooperative system (2) related to periodic orbits was established in [6], Theorem 2.1. Explicitly the following result holds.

**Theorem 2.1** (Korman (2016)). *Assume that the system (2) is cooperative and has ordered sub- and super-solution pairs  $(a(t), b(t))$  and  $(A(t), B(t))$ . Then the system has a  $T$ -periodic solution  $(x(t), y(t))$ , satisfying  $a(t) < x(t) < A(t)$ ,  $b(t) < y(t) < B(t)$ , for all  $t$ . Furthermore, any solution of (2), with initial condition  $(x(0), y(0))$  satisfying  $a(0) < x(0) < A(0)$  and  $b(0) < y(0) < B(0)$ , converges to the product of the strips*

$$(\check{x}(t), \hat{x}(t)) \times (\check{y}(t), \hat{y}(t)),$$

where  $(\check{x}(t), \check{y}(t)), (\hat{x}(t), \hat{y}(t))$  are the minimal, maximal  $T$ -periodic solution, respectively.

We complement the previous assertion by saying that there is an implicit assumption, namely that nor  $x_0 \in [a(0), A(0)]$  neither  $y_0 \in [b(0), B(0)]$  exist such that either one or both of the following inequalities hold:

$$\check{x}(t) = x_0 = \hat{x}(t), \quad \check{y}(t) = y_0 = \hat{y}(t), \quad \forall t \in \mathbb{R}. \tag{6}$$

Indeed, if one or both of the equalities (6) hold, then for any initial condition  $a(0) < x(0) < A(0)$  and  $b(0) < y(0) < B(0)$ , the corresponding components of the solution,  $x(t)$

or  $y(t)$ , may converge towards  $x_0$  or  $y_0$  as  $t \rightarrow \infty$ . Hence, there would exist a solution,  $(x(t), y(t))$ , such that  $\dot{x}(t) \equiv 0$  or  $\dot{y}(t) \equiv 0$ . Depending on the nature of the system, we could have a locally attractive fixed-point  $(x_0, y_0)$  with  $a(t) \leq x_0 \leq A(t) \times b(t) \leq y_0 \leq B(t)$ , instead of a genuine periodic orbit with  $a(t) < x(t) < A(t), b(t) < y(t) < B(t)$ ,  $\forall t \in \mathbb{R}$ .

In our situation, the origin is a sub-solution but also a fixed-point solution of system (1). Thus, under certain condition such as (8) in Theorem (2.2) below, there exist a sub-solution super-solution pair  $(a, b), (A, B)$  such that  $a \equiv A \equiv 0$  and  $(0, 0) = (a, b)$ . Therefore, by property (6),

$$\tilde{u}(t) \equiv u_0 = 0 \equiv \hat{u}(t),$$

and by substitution we also have  $\tilde{v}(t) \equiv v_0 = 0 \equiv \hat{v}(t)$ . Therefore, the origin is a local attractive fixed point. Notice that there are no other fixed points for (1).

For the  $T$ -periodic continuous function  $D(t)$  we set

$$D^* := \max_{t \in [0, T]} D(t) \text{ and } D_* := \min_{t \in [0, T]} D(t). \quad (7)$$

Now we state our first result.

**Theorem 2.2 (Existence).** *Assume  $r, p, \delta, K > 0$  and  $D(t)$  is a non negative, non constant continuous  $T$ -periodic function. Then the following mutually exclusive assertions hold.*

*If*

$$D_* > r + \frac{p}{\delta + p} D^*, \quad (8)$$

*then the origin is a local attractor for every initial condition in a suitable rectangle  $(u(0), v(0)) \in [0, \epsilon] \times [0, \epsilon]$ .*

*If*

$$r + \frac{p}{p + \delta} D_* > D^*, \quad (9)$$

*then there exists at least one  $T$ -periodic solution  $(u(t), v(t))$  of (1) whose components are positive.*

*Proof.* By a straightforward computation the system (1) is cooperative. We construct sub- and super-solution pairs.

For a sub-solution pair; we consider

$$(a(t), b(t)) \equiv (0, 0).$$

These functions satisfy the inequalities in (4). Therefore they constitute a sub-solution pair. For constructing a super-solution pair  $(A(t), B(t))$  first we take

$$A_0 := (l + 1)K, \quad (10)$$

with  $l$  a positive constant to be chosen.

$$\dot{A} = 0, \quad A(0) = A_0, \quad (11a)$$

$$\dot{B} = D(t)A - (\delta + p)B, \quad B(0) = B_0. \quad (11b)$$

Replacing in (5), we get

$$\dot{A} = 0 \geq f(l), \tag{12}$$

where

$$\begin{aligned} f(l) &:= rK(l+1) \left( 1 - \frac{(l+1)K}{K} \right) - D(t)(l+1)K + pB(t) \\ &= -rK(l+1)l - D(t)(l+1)K + pB(t) \end{aligned} \tag{13}$$

and

$$\dot{B} = D(t)K(l+1) - (\delta + p)B(t). \tag{14}$$

We choose  $B(t)$  to be the unique positive  $T$ -periodic solution of (14); by direct computation we have

$$B(t) = B_0 e^{-(\delta+p)t} + e^{-(\delta+p)t} \int_0^t e^{(\delta+p)s} D(s)K(l+1)ds,$$

with

$$B_0 = \frac{(l+1)K}{e^{(\delta+p)T} - 1} \int_0^T e^{(\delta+p)s} D(s)ds. \tag{15}$$

A short computation shows that

$$0 \leq B_0 \leq \frac{(l+1)KD^*}{\delta+p}, \quad 0 \leq B(t) \leq \frac{(l+1)KD^*}{\delta+p} e^{(\delta+p)T}. \tag{16}$$

Using (16) and taking into account that  $D(t) \geq 0$ , we have that  $f'(l)$  is bounded above by a quadratic polynomial in  $l$  with negative leading term; therefore, there exists  $l > 0$  large enough such that

$$0 \geq f(l). \tag{17}$$

Thus, considering (17), (12) and (14), we satisfy both inequalities in (5). Consequently,  $(A(t), B(t))$  form a super-solution pair.

Let  $l_0 \geq -1$  be the infimum of the set of values  $l > -1$  such that (17) holds.

When (9) holds, then  $f'(-1) > 0$ . Moreover,  $f(-1) = 0$  and  $l_0 > -1$ . For the corresponding supersolution,  $(A, B)$ , for  $l > l_0$ , we apply Theorem 2.1. Therefore, there exists at least one  $T$ -periodic solution for system (1). This proves the second part of the Theorem.

When (8) holds, then  $f'(-1) < 0$ ; hence there exists  $\epsilon > 0$  such that (17) holds for every  $l \in [-1, -1 + \epsilon]$ . Theorem 2.1 implies that for every  $l \in [-1, -1 + \epsilon]$  and every initial condition  $(u(0), v(0)) \in [0, \epsilon] \times [0, \epsilon_1]$  with

$$\epsilon_1 := \frac{\epsilon K}{e^{(p+\delta)T} - 1} \int_0^T e^{(\delta+p)Ts} D ds,$$

there exists convergence to a periodic orbit or a fixed point  $(u_\epsilon(t), v_\epsilon(t))$  with  $a(t) \leq u_\epsilon(t) \leq A(t)$  and  $b(t) \leq v_\epsilon(t) \leq B(t)$ . As  $\epsilon \rightarrow 0$ , we have  $\lim_{\epsilon \rightarrow 0} (A, B) = (0, 0)$ ; hence,  $u_\epsilon(t) \equiv 0 \equiv v_\epsilon(t)$ ,  $t \geq 0$ . Moreover,  $l_0 = -1$  and the origin,  $(A, B) = (0, 0)$ , is also a super-solution.

This proves the first claim of Theorem 2.2, which proves the result. \(\square\)

Freedman and Pinho in [3] recently investigated the case with perturbed periodic dosage; thus our result presents an alternate proof to its result and extends it. Our existence result Theorem 2.2 naturally raises the questions if the periodic solution is unique and globally attracting.

Recall that a solution  $(u(t), v(t))$  of (2) is globally attracting on a positively invariant set  $R \subseteq \mathbb{R}^2$  if all solutions  $(x(t), y(t))$  with  $(x(0), y(0)) \in R$  satisfy

$$(x(t), y(t)) - (u(t), v(t)) \rightarrow 0, t \rightarrow \infty.$$

We now establish conditions over the uniqueness and global stability of the periodic solutions.

**Theorem 2.3 (Uniqueness).** *Under condition (9) as in Theorem 2.2, if in addition the following inequality holds,*

$$\frac{\delta}{\delta + p} \bar{D} > rT, \quad (18)$$

*then there exists a unique  $T$ -periodic solution of (1) in  $\mathbb{R}_+^2$  which attracts all other positive solutions as  $t \rightarrow \infty$ . Here  $\bar{D} = \int_0^T D(s) ds$ .*

*Under condition (8) as in Theorem 2.2, if (3) holds, then every solution of (1) in  $\mathbb{R}_+^2$  is attracted to the origin as  $t \rightarrow \infty$ .*

*Proof.* Given any periodic  $T$ -solution we can chose  $l > 0$  and a solution of (11) with  $A_0 > 0, B_0 > 0$  large enough, so that we can consider the periodic solution as dominated by this super-solution. According to Theorem 2.1, the set of periodic solutions of (1) is ordered, i.e., we can take the maximal periodic solution,  $(\hat{u}(t), \hat{v}(t))$ , as well as the minimal periodic solution,  $(\check{u}(t), \check{v}(t))$ , so that for any other periodic solution,  $(u(t), v(t))$ , we have  $\check{u}(t) \leq u(t) \leq \hat{u}(t)$  and  $\check{v}(t) \leq v(t) \leq \hat{v}(t)$ . Our strategy is to prove that under condition (3) we actually have  $(\hat{u}(t), \hat{v}(t)) = (\check{u}(t), \check{v}(t))$ .

Substitute  $(\hat{u}(t), \hat{v}(t))$  and  $(\check{u}(t), \check{v}(t))$  in (1), then integrate the first equation in (1) over  $[0, T]$ . Hence by subtraction we get

$$\int_0^T r (\hat{u} - \check{u}) - \frac{r}{K} (\hat{u}^2 - \check{u}^2) dt + p \int_0^T (\hat{v} - \check{v}) dt = \int_0^T D(t) (\hat{u} - \check{u}) dt;$$

integrating the second equation in (1) over  $[0, T]$ , we obtain

$$\int_0^T D(t) (\hat{u} - \check{u}) dt = (p + \delta) \int_0^T (\hat{v} - \check{v}) dt.$$

Adding both equations in system (1) and integrating we get

$$\int_0^T r (\hat{u} - \check{u}) - \frac{r}{K} (\hat{u}^2 - \check{u}^2) dt = \delta \int_0^T (\hat{v} - \check{v}) dt. \quad (19)$$

Hence,

$$\int_0^T r (\hat{u} - \check{u}) dt - \frac{r}{K} (\hat{u}^2 - \check{u}^2) dt = \delta \int_0^T (\hat{v} - \check{v}) dt = \frac{\delta}{\delta + p} \int_0^T (\hat{u} - \check{u}) D dt.$$

Recall that  $\hat{u}(t) - \check{u}(t) \geq 0$ ; then,

$$0 \geq M \left( rT - \frac{\delta}{\delta + p} \bar{D} \right) \geq \int_0^T \left( r - \frac{\delta}{\delta + p} D \right) (\hat{u} - \check{u}) dt \geq \frac{r}{K} \int_0^T (\hat{u}^2 - \check{u}^2) dt,$$

where  $M \geq 0$  is the supremum of  $\hat{u} - \check{u}$ . Therefore  $\hat{u}(t) = \check{u}(t)$  and by (19) we also have  $\hat{v}(t) = \check{v}(t)$ .

We finally use Theorem 2.1 to complete the proof. Indeed, observe that with our construction, by choosing  $l$  sufficiently large, we can make the supersolutions arbitrarily large see ((10) and (15)). By the Theorem 2.1, the unique  $T$ -periodic solution is then a global attractor for all positive solutions.  $\square$

### 3. Examples and applications

In the previous section we established analytically the existence of periodic solutions for system (1) with periodic radiation cancer treatment. The object of this section is to show numerical evidence of the existence of periodic solutions. We numerically solved these equations using Mathematica. The graphs correspond to numerical approximations of the periodic analytic solution. The choice of the parameters arises from empirical data and of actual models and practices from radiotherapy. They should not be taken too seriously if they only show simple plausible applications of our model. The experimental validation of the model and further applications to more subtle model needs to be explored.

For the logistic grow model we take  $r = 0.502/day$ ,  $K = 1297 mm^3$ , corresponding to the fit of parameters for cells in Lewis lung carcinomas in mice described in [1], with an initial population  $u(0) + v(0) = 1$  units corresponding to  $1 mm^3 \approx 10^6 cells$ .

For the other parameters we refer to the textbook [2]. Here it is explained that the advantages of a multifraction treatment are to spare early reactions on tissues like skin, mucosa, intestinal epithelium in comparison with those that are late responding such as spinal cord. Thus it is important to establish optimal radiation protocols mediating between non-desired effects. We consider an adaptation of the linear-quadratic model (LQ) we have the dose given by  $D = \alpha d + \beta d^2$ , where  $d$  is the individual dose. Here the biological effective dose (BED) equals

$$D/\alpha = (\text{Total dose}) \times (\text{Relative effectiveness}),$$

with  $\alpha \approx 0.3$  the logarithm of cells ‘killed’ per Gy; here we interpret killed as quiescent (see also [10] for this interpretation). Thus, for a Conventional Treatment of 30 fractions  $\alpha/\beta = 10/Gy$ ,  $d = 2Gy$  per day. Hence, the periodic discrete dose is specified by  $D = \alpha \cdot 60 \cdot \left(1 + \frac{d}{10}\right)$ . If we adapt a continuous dose function, we get

$$D(t) = \alpha \cdot 60 \cdot \left(1 + \frac{d(\sin(2\pi t) + 1)}{10}\right).$$

Notice that  $D_* = 18$ . For  $\delta > 0.002$  condition (3) holds.

For the estimation of the parameter  $p$  we consider a constant dose per day whose total dose is the proliferation correction of the dose [2]. For the protocol of the conventional treatment this yields  $p = \alpha(8.3 Gy/30 days) = 0.083$ .

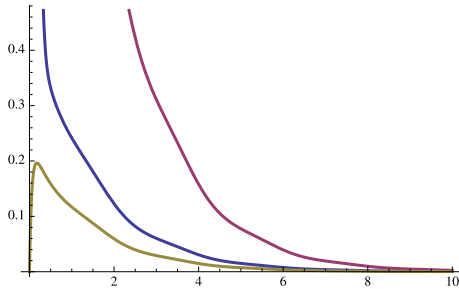
**Example 3.1.** For the two initial subpopulations we consider the growth fraction (GF) estimated as 0.5; which is the midpoint of the experimental range  $0.3 \sim 0.7$  in certain mice carcinoma. Thus for a GF value of 0.5 we have  $u(0) = 0.5, v(0) = 0.5$ ;  $\delta$  may be estimated from an experimental rate denominated ‘cell-loss factor’ ( $\phi$ ) described in textbook [2]. Thus take  $\delta = 0.7$  as the cell-killing factor arising only by necrosis in quiescent cells in mouse carcinoma. Thus the system (1) becomes

$$\dot{u} = 0.502u(1 - u/1297) - (18 + 0.9(\sin(2\pi t) + 1))u + 0.084v, \quad (20a)$$

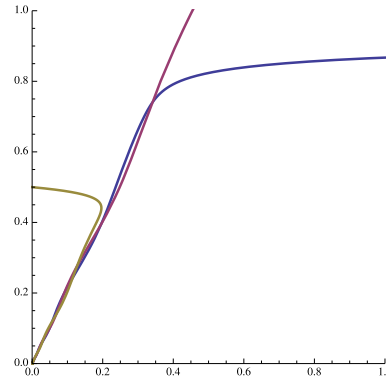
$$\dot{v} = (18 + 0.9(\sin(2\pi t) + 1))u - 0.084v - 0.7v \quad (20b)$$

(see Fig. 1).

Numerical evidence, using Mathematica, supports the claim that the tumor vanishes for sufficiently long time (see Fig. 2). Actually (8) holds, therefore the origin is a local attractor as stated in the first claim in Theorem 2.2. Here condition (3) also holds, therefore the origin is a global attractor.



**Figure 1.** Time plots for sub-population  $u(t)$  for  $\delta = 0.7$ . We observe that the solutions for several initial conditions:  $(u(0), v(0)) \in \{(0.5, 0.5), (5, 0), (0, 0.5)\}$  vanish.

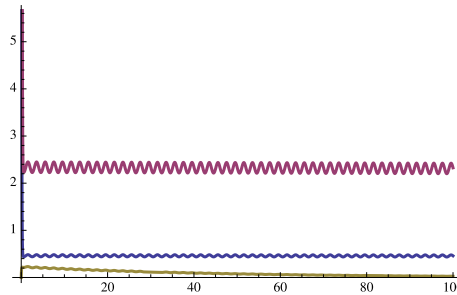


**Figure 2.** Phase space plots for  $u(t), v(t)$  with  $\delta = 0.7$  and initial conditions  $(u(0), v(0)) \in \{(0.5, 0.5), (5, 0), (0, 0.5)\}$ . There is a scaling factor of  $10^{-2}$  for the  $u$  component.

The following examples are motivated by natural questions about the conditions for existence and stability. The choice for the parameters do not arise from experimental data. Related results and models can be seen in [7], where periodic function coefficients are considered and other criteria are described. It would be interesting to find the full picture, with a precise description of all different dynamics that may appear in this model.

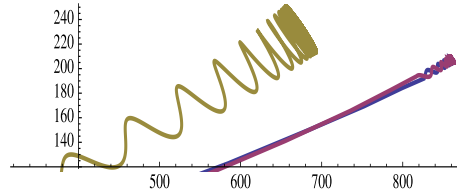
**Example 3.2.** Take  $\delta_0 = rp/(D_* - r) = 0.0024098$ . Neither condition (8) nor condition (9) hold, therefore we can not claim that certain initial conditions converge either to the origin or to a periodic orbit. Actually orbits seem to converge towards different  $\omega$ -limit sets. This lack of uniqueness of the periodic orbit is supported by numerical evidence (see Fig. 3), and is consistent with the fact that condition (3) does not hold.





**Figure 3.** Time plots for sub-population  $u(t)$  for critical value  $\delta = 0.0024098$ . We observe that the solutions for several initial conditions:  $(u(0), v(0)) \in \{(0.5, 0.5), (5, 0), (0, 0.5)\}$  converge to the corresponding numerical approximation of apparently different periodic orbits or even to the origin.

**Example 3.3.** In Fig. 4 we change  $D(t) = 0.18 + 0.009(\sin(2\pi t) + 1)$  in (20). Condition (9) remains true, therefore Theorem 2.2 implies the existence of at least one periodic orbit. Numerical evidence supports the claim that the periodic orbit is not unique. Indeed, condition (3) does not hold, therefore there is not necessarily a unique global periodic orbit.

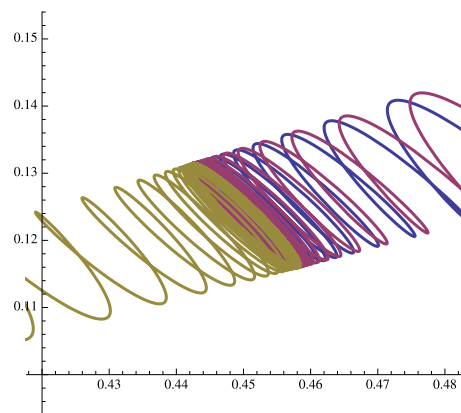


**Figure 4.** Time plots in phase space. We observe that solutions for different initial conditions,  $(u(0), v(0)) \in \{(1, 1), (10, 1), (1, 10)\}$ , converge to different periodic orbits. The vertical and horizontal lines do not correspond to the coordinate axis. They were translated onto the point  $(400, 120)$  in order to have a clear view of the region in the first quadrant where periodic orbits appear.

**Example 3.4.** We consider the following system:

$$\begin{aligned} \dot{u} &= 0.5u(1 - u) - (1.1 + 0.1 \sin(2\pi t))u + 3v, \\ \dot{v} &= (1.1 + 0.1 \sin(2\pi t))u - 3v - v, \end{aligned}$$

where condition (9) is true. Theorem 2.2 implies the existence of at least one periodic orbit. Here condition (3) does hold therefore the periodic orbit is unique. Numerical evidence supports this claim (see Fig, 5).



**Figure 5.** Time plots in phase space. We observe that solutions for different initial conditions,  $(u(0), v(0)) \in \{(0.01, 0.1), (2, 0.1), (0.2, 1)\}$ , converge to a unique periodic orbit. The vertical and horizontal lines do not correspond to the coordinate axis. They were translated onto the point  $(0.42, 0.1)$  in order to have a clear view of the region in the first quadrant where the periodic orbit appears.

**Acknowledgement:** We would like to thank the anonymous referee for the careful reading of our manuscript and for providing us with constructive comments, which helped to improve the manuscript.

## References

- [1] Benzekry S., et. al. “Classical Mathematical Models for Description and Prediction of Experimental Tumor Growth”, *PLOS Computational Biology*, 10 (2014), No. 8, 1-19. doi: 10.1371/journal.pcbi.1003800.
- [2] Hall E.J. and Giaccia A.J. *Radiobiology for the Radiologists*, Lippincott Williams & Wilkins (LWW), Philadelphia, 2018.
- [3] Freedman H. I. and Pinho S. T. R., *Persistence and extinction in a mathematical model of cell populations affected by radiation*, *Period. Math. Hungar.*, 56 (2008), 2535. doi: 10.1007/s10998-008-5025-2.
- [4] Gámez M., et. al., “Observation and control in a model of a cell population affected by radiation”, *BioSystems* 96 (2009), No. 2, 172-177. doi: 10.1016/j.biosystems.2009.01.004.
- [5] Greider B.W., Kallman R.F. and Franko A.J., “Recruitment of noncycling tumor Cells into Proliferation by Isoproterenol”, *Cancer Research*, 43 (1983), No. 4, 1501-1503.
- [6] Korman P., “A periodic model for the dynamics of cell volume”, *Annales Polonici Mathematici*, 116 (2016), 243-249. doi: 10.4064/ap3857-3-2016.
- [7] Liu Z., et. al., “Permanence, extinction and periodic solutions in a mathematical model of cell populations affected by periodic radiation”, *Applied Mathematics Letters*, 24 (2011), No. 10, 1745-1750.
- [8] Smith H., *Monotone dynamical systems: an introduction to the theory of competitive and cooperative systems*, Math. Surveys Monogr., Arizona, 1995. doi: 10.1016/S1874-5725(05)80006-9.

- [9] Wallace D.I. and Guo X., “Properties of tumor spheroid growth exhibited by simple mathematical models”, *Front Oncol*, 3 (2013). doi: 10.3389/fonc.2013.00051.
- [10] Watanabe Y., et. al., “A mathematical model of tumor growth and its response to single irradiation”, *Theoretical Biology and Medical Modeling*, 13 (2016). doi: 10.1186/s12976-016-0032-7.

## Erratum (September 7th, 2021)

For the first part of Theorem 2.3, there is a different condition that should be added to the text. Only the second part in the original article holds as stated.

**Theorem 1** (Theorem 2.3 correct statement).

Under condition (8) as in Theorem 2.2, if the following inequality holds,

$$\frac{\delta}{\delta + p} \bar{D} > rT,$$

then every solution of (1) in  $\mathbb{R}_+^2$  is attracted to the origin as  $t \rightarrow \infty$ . Under condition (9) as in Theorem 2.2, if the following inequality holds,

$$\frac{\delta}{\delta + p} \bar{D} < rT$$

then there exists a unique  $T$ -periodic solution of (1) in  $\mathbb{R}_+^2$  which attracts all other positive solutions as  $t \rightarrow \infty$ . Here  $\bar{D} = \int_0^T D(s) ds$ .

For the first statement, the proof remains the same except that, where it concludes that  $\tilde{u} = \hat{u}$  is a  $T$ -periodic solution it should say that they coincide with an equilibrium at the origin. For the second part, we provide the following proof.

*Proof.* Let us consider a sub-solution  $(a, b)$  with  $a \equiv a_0$  and  $b(t)$  such that:

$$\begin{aligned} 0 &\leq ra(1 - a/K) - aD(t) + pb, \\ b' &= aD(t) - (p + \delta)b. \end{aligned}$$

Then:

$$\begin{aligned} 0 &\leq -\frac{r}{K}Ta_0^2 + (rT - \bar{D})a_0 + p\bar{b}, \\ 0 &= a_0\bar{D} - (p + \delta)\bar{b}. \end{aligned}$$

Which implies

$$0 < a_0 \leq \frac{KT}{r} \left( rT - \frac{\delta}{\delta + p} \overline{D} \right).$$

Now, define the corresponding maxima and minima  $\hat{u}, \hat{v}, \check{u}, \check{v}$ , for  $T$ -periodic solutions of (1) with  $\hat{u}, \check{u} \geq a_0 > 0$ . Then,

$$\overline{\hat{u}^2 - \check{u}^2} = \overline{((\hat{u} + \check{u})(\hat{u} - \check{u}))} \geq 2a_0 \overline{(\hat{u} - \check{u})} \geq 0.$$

Thus, by taking the integral along  $[0, T]$  of the system (1) we get

$$\overline{\hat{v} - \check{v}} = \frac{r}{\delta} \left( \overline{\hat{u} - \check{u}} - \frac{1}{K} \overline{\hat{u}^2 - \check{u}^2} \right) \leq \overline{\hat{u} - \check{u}} \frac{r}{\delta} \left( 1 - \frac{2a_0}{K} \right).$$

Moreover, if we can choose  $a_0 > K/2$  then,  $0 \leq \overline{\hat{v} - \check{v}} \leq 0$ , and therefore  $\hat{v} = \check{v}$ . By the same token  $\hat{u} = \check{u}$ .

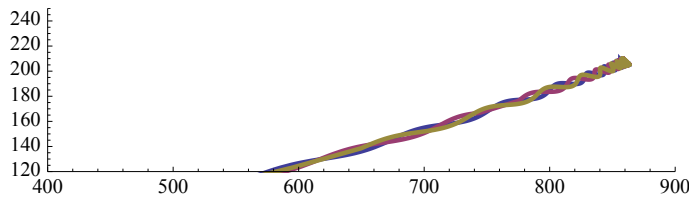
Also, notice that we can construct sub-solutions for any  $a_0$  near to 0, hence we can consider initial conditions,  $u(0) > 0$  which lead to a unique almost periodic solution  $\hat{u}(t)$  as  $t \rightarrow \infty$ .

Notice that our system (1) changes by an homothety,  $(u, v) \mapsto (\lambda u, \lambda v)$  in such a way that the corresponding capacity becomes  $K/\lambda$ . This allows us to attain the condition  $a_0 > K/2\lambda$ . We thus elicit the independence on  $K$  for  $a_0$ .

☑

The first condition can be interpreted as the description of a minimal radiation dosage or healthy-radiated cell interchange rate  $D_0 = r(\delta + p)/\delta$ , of any  $T$ -periodic radiation treatment  $D(t) \geq D_0$  which warranties the existence and uniqueness of a *vanishing* solution.

**Example 3.3.** Figure 3 should be replaced by Fig. 7.



**Figure 6.** Figure 4 corrected

**Example 3.3.** In this example, we should add that the condition  $\frac{\delta}{\delta + p} \overline{D} < rT$  holds, therefore there will exist a unique periodic orbit. Fig. 4 is wrong, it should be replaced by Fig. 6 where a plot where solutions for different initial conditions converge to a unique periodic orbit.

**Example 3.4** In this example the condition that holds is actually,  $\frac{\delta}{\delta + p} \overline{D} < rT$ .

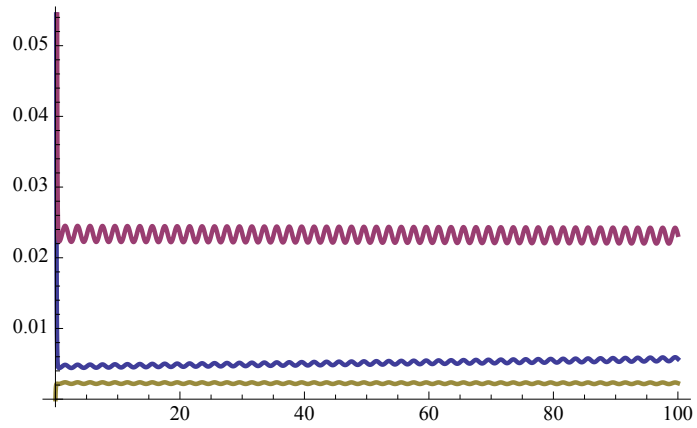


Figure 7. Figure 3 corrected.